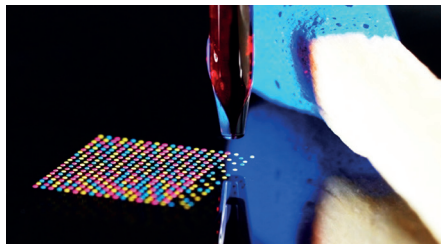


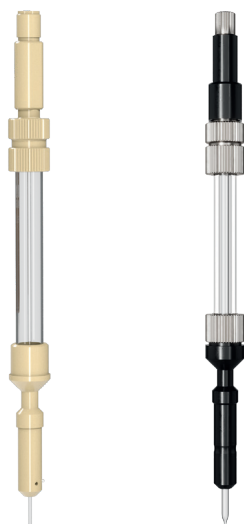
# MicroDispensers interchangeable on all Instruments



## PDMD

PIEZO-DRIVEN

10 pL to 8 nL



- ◆ Up to 40 mg / ml dispensing capability
- ◆ 1 - 1000 Hz dispensing
- ◆ Volume CV < 2 %
- ◆ Different orifice diameters
- ◆ Inert borosilicate glass
- ◆ Robust construction for easy operator handling



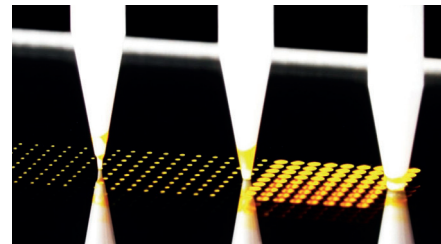
## M2MD

VALVE-BASED

8 nL to 5 µL



- ◆ Up to 50 Hz dispensing
- ◆ Volume CV 2 % to 5 %
- ◆ Bulk dispensing or Aspirate / Dispense
- ◆ Interchangeable glass capillary / plastic tips



## Pin-DMD

PIN-DRIVEN

350 pL to 35 nL



- ◆ 6x6, 2x8, 4x12, ...
- ◆ capillary or blunt
- ◆ 80 µm to 500 µm tips
- ◆ chemical inertness



M2-Automation GmbH  
Bessemerstraße 16  
12103 Berlin  
Germany



m2-automation.com  
info@m2-automation.com  
+49 30 856 11 939 0

For North and South America sales, service and support:  
axiVEND LLC  
350 E Crown Point Rd, Suite 1020  
Winter Garden, FL 34787  
United States



axivend.com  
info@axivend.com  
+1 833 294 8363





# Premium Microdispensing Instruments

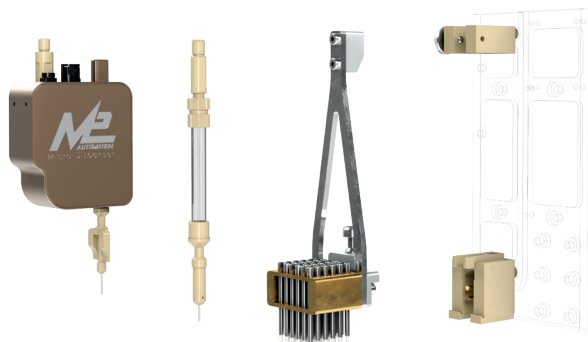
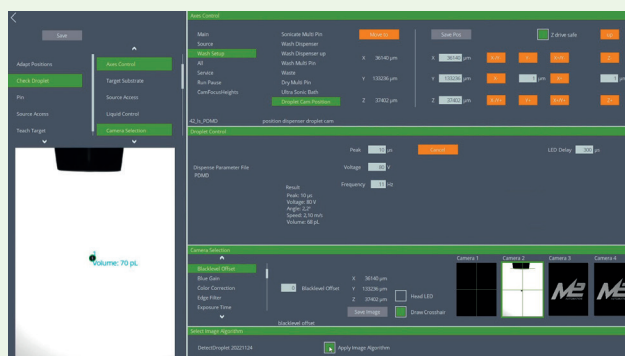
## Grow with your application

From compact entry level R&D applications  
to high-speed manufacturing



## One software for all instruments

Easily control your dispensers with the intuitive  
and user-friendly InDot software

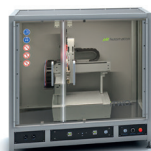
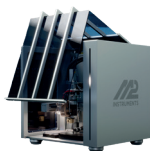


## 3 Technologies on one system

Easily interchange three different dispensing  
technologies for contact- and non-contact  
picoliter to microliter dispensing

## Common applications – supported by vision guidance

- Filling of Microcavities
- Patterning lateral flow strips
- Electrode coating on biochips
- Reagent loading microfluidics devices
- Cell dispensing
- Multiplex Immunoassays
- Protein, Aptamer and DNA microarrays
- And so much more...



| MODEL   | iFOUR   | iTWO   | iONE - 600 / 1200   | iZERO  |
|---|---|--|---|--|
| Level   | Compact Entry Level   | R&D and Academic   | Batch Production  | In-Line Automated  |
| Dimensions (W/D/H) & Weight                                 | 50 x 50 x 50 cm<br>appr. 50 kg  | 110 x 75 x 110 cm<br>appr. 150 kg                              | 150/200 x 80 x 180 cm<br>appr. 250 kg                           | 85 x 151 x 248 cm<br>appr. 500 kg                              |
| Built-in Windows PC   | The built-in Windows PC with InDot Software is integrated as standard in all devices. |  |   |  |
| Head-Camera   | The Head Camera for in-line QC is integrated as standard in all devices.              |  |   |  |
| Washing Station   | The Washing Station is integrated as standard in all devices.                         |  |   |  |
| Travel Range  | X 205 mm<br>Y 200 mm<br>Z 40 mm   | X 250 mm<br>Y 300 mm<br>Z 100 mm                               | X 600 or 1200 mm<br>Y 320 mm<br>Z 44 mm                         | X 370 mm<br>Y 398 mm<br>Z 80 mm                                |
| Spottable Area  | X 115 to 165 mm<br>Y 195 mm   | X 155 to 185 mm<br>Y 300 mm                                    | X 500 or 1100 mm<br>Y 320 mm                                    | X 370 mm<br>Y 310 mm   |
| Axis Resolution   | < 0,5 µm  | 1 µm   | 1 µm  | 1 µm   |
| Axis Type   | Belt-drives (XYZ)   | Spindle drives (XYZ)   | Linear Drives (XYZ)   | Linear Drives (XYZ)  |
| Position Repeatability                                      | < +/-10 µm  | +/-5 µm  | +/-3 µm   | +/-3 µm  |
| Droplet Imaging   | 2D  | 2D   | 2D / 3D   | 2D / 3D  |
| Humidity Control  | ✓   | ✓  | ✓   | ✓  |
| Vacuum Table  | ✓   | ✓  | ✓   |  |
| Drying Station  | ✓   | ✓  | ✓   | ✓  |
| HEPA Filter System with Flow Control                        |   | ✓  | ✓   | ✓  |
| De-Ionizer  |   | ✓  | ✓   | ✓  |
| Cooling / Heating of source and target                      |   | ✓  | ✓   | ✓  |
| Orbital Shaker for source plates                            |   | ✓  | ✓   | ✓  |
| Ultrasonic Wash Station                                     |   |  | ✓   | ✓  |
| On-the-fly dispensing                                       |   |  | ✓   | ✓  |
| Analytical Balance for volume control                       |   |  | ✓   | ✓  |
| Tray System   |   |  | ✓   | ✓  |
| Source Options<br>96, 384, 1536- MTP                        | 1   | 2  | Up to 10  | Up to 4  |
| 3x8 postions for PCR tubes<br>(100 or 200 µL)               | 1   | 2  | Up to 10  | Up to 4  |
| Reagent vials of 0.5 to 1.5 mL                              | 2   | Up to 6  | Up to 30  | Up to 12   |
| Custom holders  |   | ✓  | ✓   | ✓  |
| Target Options<br>MTP Holder                                | 2 plates  | 4 plates   | 10 or 22 plates   | 9 plate trays  |
| Glass slide adapter for<br>MTP holder (4 slides per<br>MTP) | ✓   | ✓  | ✓   | ✓  |
| Planar Target Holder /<br>Vacuum Table                      | Up to 10 slides<br>(Depending on<br>customized target<br>size)                        | Up to 28 slides<br>(Depending on<br>customized target<br>size) | Up to 176 slides<br>(Depending on<br>customized target<br>size) | Up to 65 slides<br>(Depending on<br>customized target<br>size) |

# iFOUR

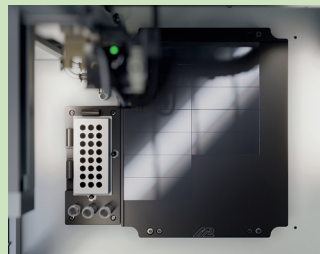
The compact benchtop  
Microdispenser



The entry level instrument for R&D applications



Easy-to-swap Dispenser  
Options



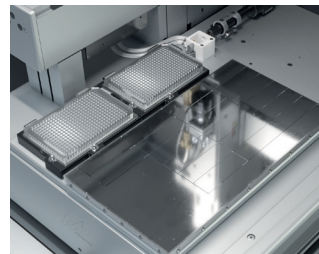
Multiple source and target  
options

# iTWO

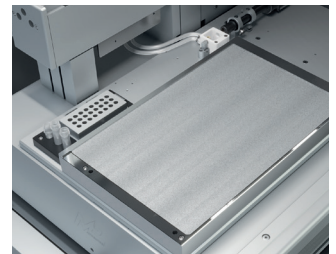
Designed for R&D and small  
batch production



Optional high-duty mobility table



Cooling / Heating of source  
and target



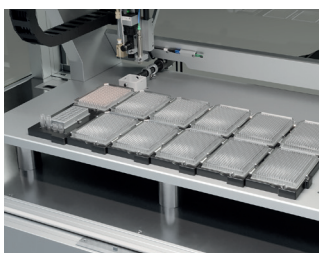
Various flat substrate  
Vacuum Tables

# iONE

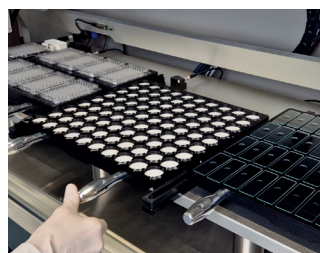
The instrument for  
high-production capacities



Available in two different sizes (iONE 600 or 1200)



High speed XYZ axes,  
top speed: 1000 mm/s



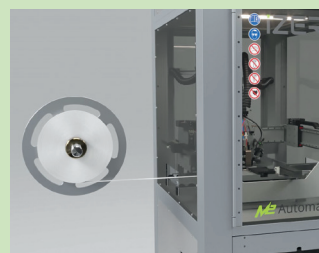
Optional tray system for  
ease-of-use

# iZERO

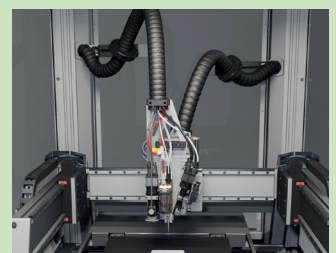
The scalable high throughput  
production line



Expandable modular production line to meet all needs



Integrated via Reel-to-Reel or  
conveyor belts



Each module performs  
partial spotting